

## Denominational Review Briefing

18 March 2020

The Education Service has carried out a review of Midlothian's denominational school provision in the context of a national shortfall in availability of teachers with approval necessary to teach in Roman Catholic (RC) schools. In 2016 the Catholic Church through Archbishop Tartaglia declared a 'crisis in faith education' due to the shortage of Catholic teachers in Catholic Schools (The Tablet.co.uk June 2016).

The RC primary schools across Midlothian currently operate with only 50% of teaching staff having Church approval; shared headship arrangements in place for 6 of our RC primary schools, some of which are unsustainable; and ongoing challenges in relation to recruitment of both teaching and senior leadership staff.

In Midlothian, at the time of the 2019 pupil census, we have seven RC primary schools with a total of 907 pupils and one RC secondary school with 648 pupils which serves Musselburgh as well as Midlothian. The overall percentage of children attending our RC primary schools in 2019/20 who have a declared affinity with the RC faith is 40%:

RC Primary School	Total Roll	Percentage RC
Sacred Heart	127	34%
St Andrew's	157	36%
St David's	192	41%
St Luke's	201	34%
St Margaret's	40	48%
St Mary's	135	51%
St Matthew's	55	41%
	<b>907</b>	<b>40%</b>

The projected school rolls for August 2020 are shown in the table below:

Primary School Projection August 2020								
	P1	P2	P3	P4	P5	P6	P7	Total
Sacred Heart	17	18	16	20	21	16	20	128
St Andrew's	24	22	17	25	23	22	22	155
St David's	25	26	25	27	30	30	32	195
St Luke's	32	31	28	31	33	27	26	208
St Margaret's	2	7	4	3	4	5	1	26
St Mary's	17	16	25	16	15	29	24	142
St Matthew's	6	7	6	13	8	10	12	62
	123	127	121	135	134	139	137	916
Secondary School Projection August 2020								
	S1	S2	S3	S4	S5	S6	Total	
St David's RC High School	141	141	139	108	93	75	697	

Our objective is to stabilise and strengthen RC provision and denominational education within and across Midlothian and we have agreed, in partnership with our head teachers a preferred model for our RC schools. The Education Service plan to present a report to Council as soon as possible in order to obtain governance to proceed to a statutory consultation on the preferred model.

The required outcomes we have applied in arriving at a preferred model which will be:

- To reduce the required complement of head teachers and teaching staff with Church approval;
- To create an RC school structure which provides opportunities for staff progression;
- To maintain sufficient primary RC school capacity across Midlothian;
- To minimise the detrimental effect on the number of pupils who will go on to attend St David's High School;
- To minimise the increase in distances for children to travel from home to school.

The preferred model is one based on 4 RC primary schools, with locations in Dalkeith, Gorebridge, Bonnyrigg and Penicuik, and 1 RC secondary school. Of all the models examined this is the only one which we consider to be viable in terms of reducing the number of schools, and therefore the overall required complement of teaching staff and head teachers with Church approval, while maintaining sufficient primary RC capacity across Midlothian, and minimising the detrimental effect on the number of pupils who will go on to attend St David's High School.

This model will still be, in the short to medium term, challenging to sustain in terms of teacher staffing, particularly for head teacher and other management positions. To address this we will invest in a workforce plan specifically for our RC schools which will strengthen our ability to grow our own RC teachers, middle managers and head teachers. We intend to work closely with the Diocese, Scottish Catholic Education Service and initial teacher education establishments to develop plans to develop and build capacity across the denominational sector.

### **Preferred Model for Statutory Consultation**

- One RC primary school in Dalkeith located on the St David's RC Primary School site to serve Dalkeith, Danderhall, Easthouses and rural areas.
- One RC primary school in Gorebridge located on the St Andrew's RC Primary School site to serve Gorebridge, Newtongrange, Mayfield and rural areas.
- One RC primary school in Bonnyrigg located on the St Mary's RC Primary School site to serve Bonnyrigg, Loanhead and Rosewell.
- One RC primary school in Penicuik located on the Sacred Heart RC Primary School site to serve Penicuik, Bilston, Roslin and rural areas.

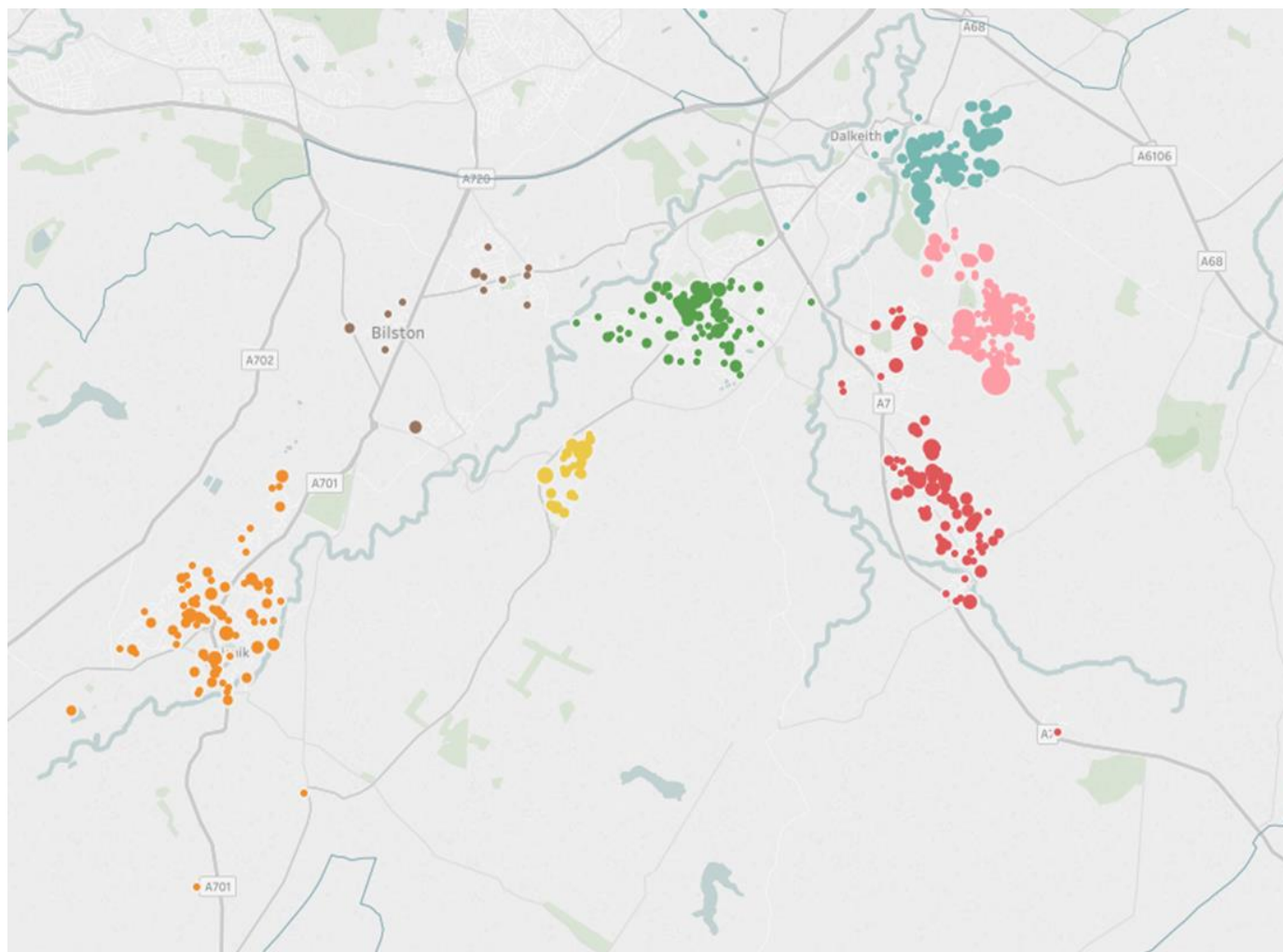
The detail of catchment areas for each school has yet to be finalised, it is intended that they will be based on the shortest distance from home to school, including consideration of available safe routes to school. This is particularly relevant for the current catchment areas of St Luke's and St Margaret's RC Primary Schools.

## Pre-Consultation and Statutory Consultation Timeline

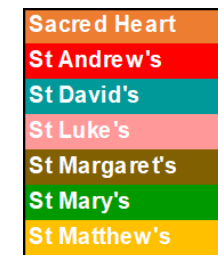
	Minimum Time	Date From	Target Completion Date
Pre-consultation		Aug 2019	June 2020
Obtain Council governance to progress to statutory consultation			24-March-20
Prepare consultation papers - detail proposal, educational benefits, financial implications, including impact on pupils, staff, premises, travel.			June 20
Consultation period	6 weeks	19-Aug-20	2-Oct-20
Education Scotland review	3 weeks	07-Oct-20	28-Oct-20
Publish Consultation Report			2-Nov-20
Further consideration after publication of report	3 weeks		23-Nov-20
Report outcome to Council			24-Nov-20
Council Meeting & Decision			15-Dec-20
Ministerial Call In	up to 8 weeks		mid Feb 21
School Closure Review Panel if called in	up to 17 weeks		mid June 21
Council Meeting following Review Panel decision			August 2021
Council implements decision from	Aug 2021 or later if called in		

## Current Model

The dots on the map represent current Midlothian resident pupils' postcode locations, colours show RC school catchments, the table shows home to school distances. The average distance from home to school is 0.5 miles

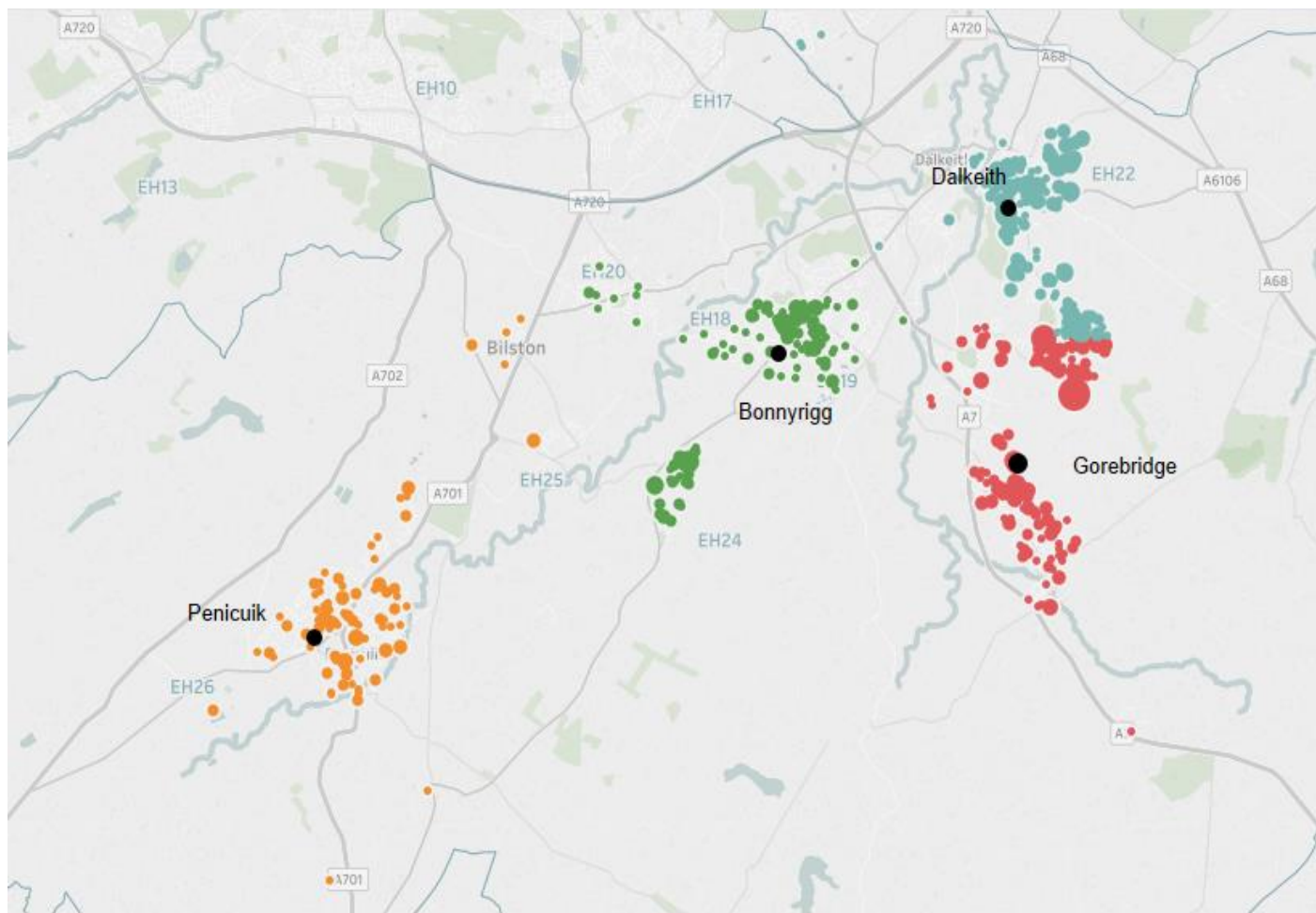


Home to school distance				
Current Model	Min. Distance	Avg. Distance	Max. Distance	No Records
Sacred Heart Primary School	0.0	0.6	2.3	121
St Andrew's RC Primary School	0.0	0.6	2.7	155
St David's RC Primary School	0.1	0.5	2.6	192
St Luke's RC Primary School	0.1	0.4	1.0	218
St Margaret's RC Primary School	0.2	1.0	1.9	17
St Mary's RC Primary School	0.0	0.4	1.2	123
St Matthew's RC Primary School	0.1	0.3	0.6	48
Grand Total	0.0	0.5	2.7	874



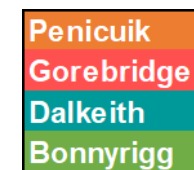
## Preferred Model

The dots on the map represent current pupils' postcode locations, colours show proposed RC school catchments, the table shows home to school distances. The average distance from home to school is 0.8 miles, an increase of 0.3 miles in average distance from home to school.



Home to school distance				
	Min. Distance	Avg. Distance	Max. Distance	Number of Records
Preferred Model				
Bonnyrigg	0.0	0.9	4.6	180
Dalkeith	0.1	0.6	2.6	290
Gorebridge	0.0	1.0	2.7	275
Penicuik	0.0	0.8	3.6	129
Grand Total	0.0	0.8	4.6	874

Preferred model. Home to school distance				
	Min. Distance	Avg. Distance	Max. Distance	Number of Records
From current RC catchment				
Sacred Heart Primary School	0.0	0.6	2.3	121
St Andrew's Primary School	0.0	0.6	2.7	155
St David's Primary School	0.1	0.5	2.6	192
St Luke's Primary School	0.4	1.2	1.8	218
St Margaret's Primary School	2.0	3.3	4.6	17
St Mary's Primary School	0.0	0.4	1.2	123
St Matthew's Primary School	1.2	1.6	1.9	48
Grand Total	0.0	0.8	4.6	874



## Projected Primary Pupil Numbers for Preferred Model

Preferred Model - One RC primary school in each major settlement							
Dalkeith, Danderhall, Easthouses		Gorebridge, Mayfield, Newtongrange		Bonnyrigg, Loanhead, Rosewell		Penicuik, Bilston, Roslin	
St David's site		St Andrew's site		St Mary's site		Sacred Heart site	
Projection	2029	Projection	2029	Projection	2029	Projection	2029
Dalkeith	202	Gorebridge	175	Bonnyrigg	149	Penicuik	146
Danderhall	20	Mayfield	47	Rosewell	33	Bilston/Roslin	14
Easthouses	51	Newtongrange	31	Loanhead	17		
<b>Total</b>	<b>273</b>	<b>Total</b>	<b>253</b>	<b>Total</b>	<b>199</b>	<b>Total</b>	<b>160</b>

The pupil numbers projected for 2029 use the same assumptions as those in the Learning Estate Strategy pupil projections other than where there is a change of location. In these cases as their catchment RC school is further away we have assumed that only those of RC faith are likely to make the choice to attend an RC school.

The pupil projections in the table assume that the catchment of the RC primary school in Bonnyrigg will include the Loanhead area and the catchment of the RC primary school in Gorebridge will include the Mayfield area. The detail of catchment areas for each school have yet to be finalised, it is intended that they will be based on the shortest distance from home to school, including consideration of available routes.

### Next Steps

- Obtain governance to proceed to statutory consultation
- Carry out further engagement activities from now until the end of this academic session. These pre-consultation activities will involve all relevant key stakeholders, including staff, children, parents and Church representatives.
- Prepare statutory consultation papers taking into account all feedback received from pre-consultation.

Link to Denominational Review Survey - <https://www.smartsurvey.co.uk/s/EMYQEL/>

Link to Denominational Review Staff Survey - <https://www.smartsurvey.co.uk/s/F5UIQN/>

Link to consultation website -

[https://www.midlothian.gov.uk/directory\\_record/36919555/informal\\_pre-consultation\\_on\\_denominational\\_education](https://www.midlothian.gov.uk/directory_record/36919555/informal_pre-consultation_on_denominational_education)

Please let us know your views by completing the survey, which you can access by clicking on the relevant link above. Due to current circumstances we have not set a closing date for these surveys at this time. We will publicise the closing date once it is set.